

IIF, Open Data, Crowdsourcing and the National Library of Wales

@Wiki_NLW



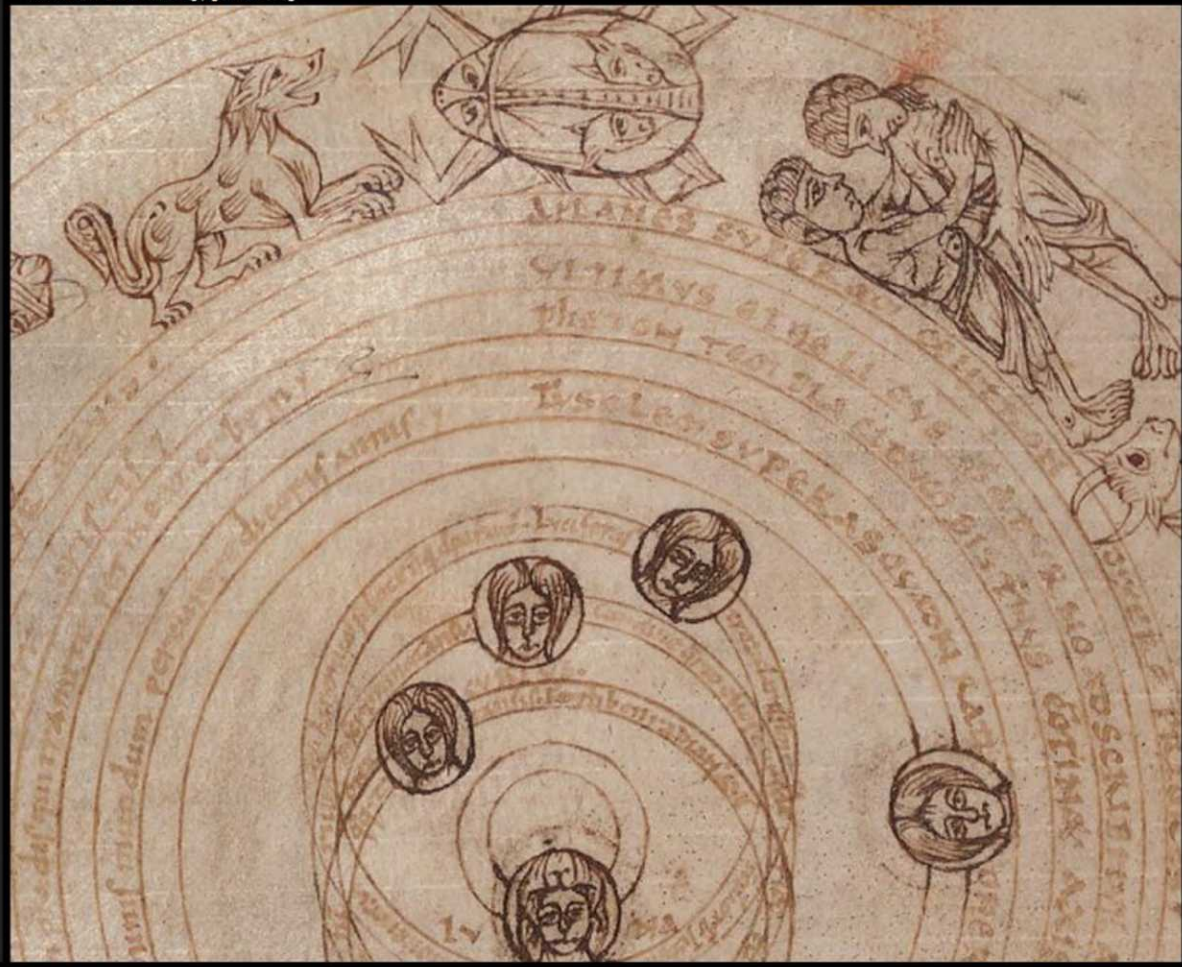
WIKIMEDIA
UK

LG
NLW

CONTENTS

<< Texts on astronomy, [11 cent.]

>> MORE INFORMATION



About the item

Title
Texts on astronomy, [11 cent.]

Period
1001 - 1100

Permalink
<http://hdl.handle.net/10107/4387889>

Language
Latin.

Reference
NLW MS 735C [RESTRICTED ACCESS].

Repository
This content has been digitised by The National Library of Wales

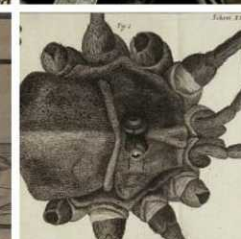
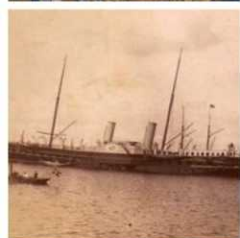
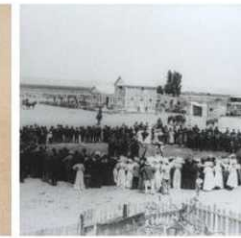
Description
Latin texts in prose and verse, the bulk of the contents relating to astronomy. There are numerous coloured sketches and diagrams.

Attribution
Llyfrgell Genedlaethol Cymru – The National Library of Wales

License
<http://hdl.handle.net/10107/PublicDomainMark>

Logo





+ add value

Commons category



NLW MS 735C Medieval Astronomy

edit

▼ 0 references

+ add reference

+ add value

IIF manifest



<https://damsssl.lgc.org.uk/iif/2.0/4387889/manifest.json>

edit

▼ 0 references

+ add reference

+ add value

+ add statement

Identifiers

Handle ID



10107/4387889

edit

▼ 0 references

+ add reference

+ add value

National Library of Wales
Authority ID



texts-on-astronomy

edit

▼ 0 references

+ add reference

+ add value

+ add statement



```

1 PREFIX wd: <http://www.wikidata.org/entity/>
2 PREFIX wdt: <http://www.wikidata.org/prop/direct/>
3
4 SELECT DISTINCT ?item ?itemLabel ?itemDescription ?handle ?iiif
5 where {
6   ?item wdt:P276 wd:Q85098865 .
7   ?item wdt:P1184 ?handle .
8
9   OPTIONAL { ?item wdt:P6108 ?iiif } .
10
11 SERVICE wikibase:label {
12   bd:serviceParam wikibase:language "en"
13
14 }
15 }

```

			handle	iiif
		Penrhyn Castle, showing horse-drawn carriage	10107/1131477	<https://damsssl.llgc.org.uk/iiif/2.0/1131477/manifest.json>
		edra, Bangor.	10107/1128855	<https://damsssl.llgc.org.uk/iiif/2.0/1128855/manifest.json>
			10107/1130152	<https://damsssl.llgc.org.uk/iiif/2.0/1130152/manifest.json>
		edra, Bangor	10107/1130695	<https://damsssl.llgc.org.uk/iiif/2.0/1130695/manifest.json>
			10107/1133418	<https://damsssl.llgc.org.uk/iiif/2.0/1133418/manifest.json>
			10107/1131103	<https://damsssl.llgc.org.uk/iiif/2.0/1131103/manifest.json>
wd:Q21654101	A Baptist chapel	photograph by John Thomas; exterior of chapel	10107/1123830	<https://damsssl.llgc.org.uk/iiif/2.0/1123830/manifest.json>
wd:Q21627041	The Tubular & Menai suspension bridges near Bangor	landscape print	10107/1130327	<https://damsssl.llgc.org.uk/iiif/2.0/1130327/manifest.json>
wd:Q21627058	The Menai Bridge, Bangor: north Wales	landscape print	10107/1132790	<https://damsssl.llgc.org.uk/iiif/2.0/1132790/manifest.json>
wd:Q21626252	The city of Bangor, Caernarvonshire	landscape print	10107/1131428	<https://damsssl.llgc.org.uk/iiif/2.0/1131428/manifest.json>
		landscape print; view of St. Deiniol's Cathedral, Bangor, with a	10107/1133333	<https://damsssl.llgc.org.uk/iiif/2.0/1133333/manifest.json>

TIPOLOGIE ▾

IMMAGINI (8.081)

TAG DI IMMAGINI

- galles
- welsh landscape collection
- ritratti
- welsh portraits collection
- stampa
- chierico
- fotografia
- politico
- donna
- militare
- poeta
- scrittore

ARGOMENTI ▾

LIVELLO SCOLASTICO ▾

LINGUE ▾

NOVITÀ ▾

PAESI ▾

DISTRIBUTORI ▾

NATIONAL LIBRARY OF WALES
(8.081) ▲



Glyn Lledr, a Moel Siabod...

Andrew Maclure



Caer Kennan Castle

J.B.



Owen Wynne Jones, 'Gla...

John Thomas



Revd. John Wesley A.M

Thomas Holloway



Owen Wynne Jones, 'Gla...



Queen Elizabeth

William Greatbach



Elizabeth of York

Andrew Birrell



U. Larsing





Watercolours

[BY KEYWORD](#)[BY LOCATION](#)[FILTERS](#)[RESET](#)

Having trouble finding what you're looking for? [See our search tips](#)



Wikidata Image Positions

This tool shows [relative position within image](#) qualifiers of [depicts](#) statements as areas on the relevant image.

For statements on [Wikidata](#) items, they are shown on the item's [image](#) (or other property). For statements on [Structured Data on Commons](#) files, they are shown on the file itself.

By item and property

Item ID

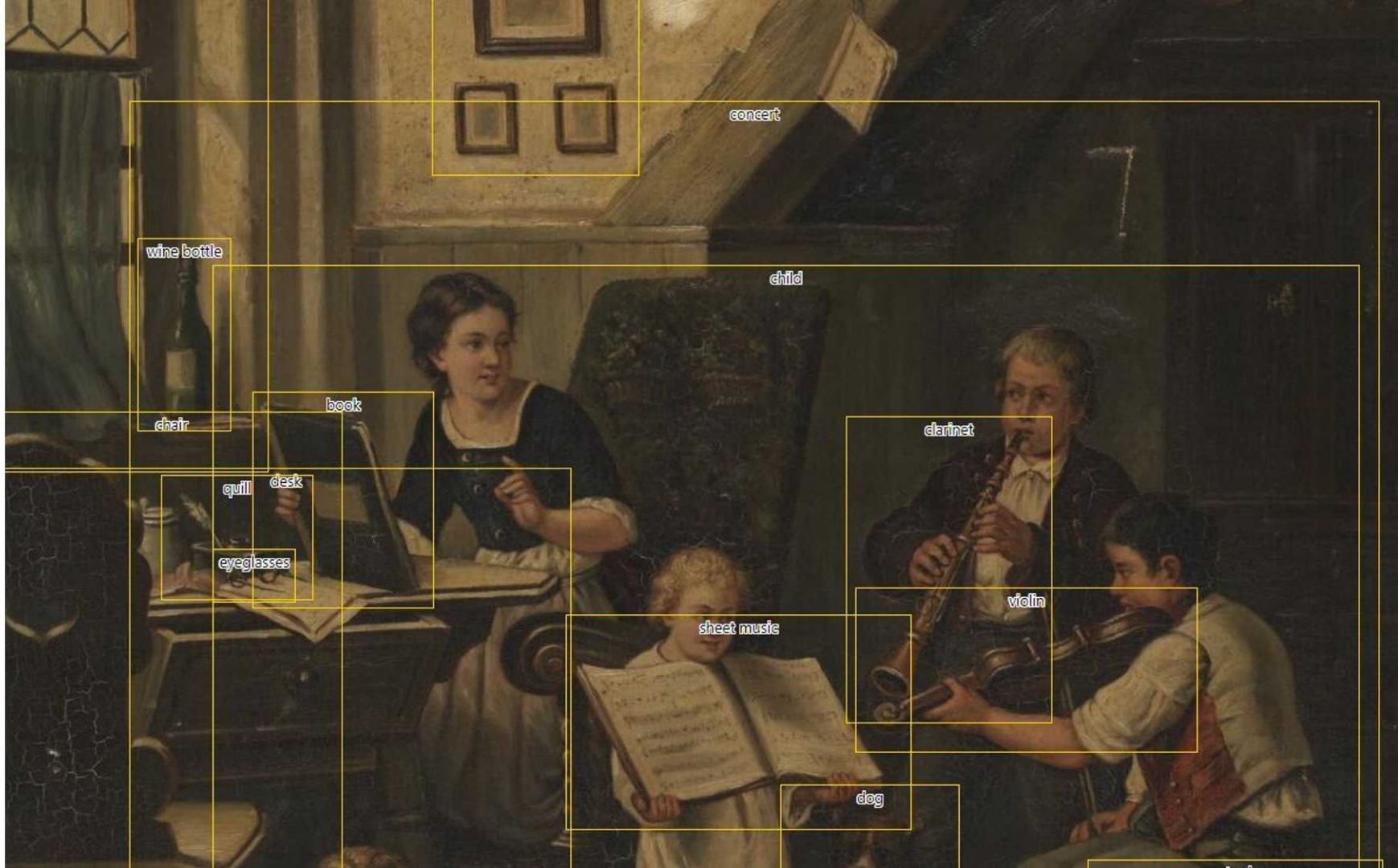
Property ID (optional)

[Load](#) [Preview IIIF](#) [IIIF Manifest](#)

By file

File title

[Load](#)



concert

wine bottle

child

book

chair

clarinet

quill

desk

eyeglasses

violin

sheet music

dog








Crotos

Crotos Lab

Artworks fragments (cf. [IIIF Image Cropper](#)) - Language

Depicts : (SparQL query) - Collection: **National Library of Wales**

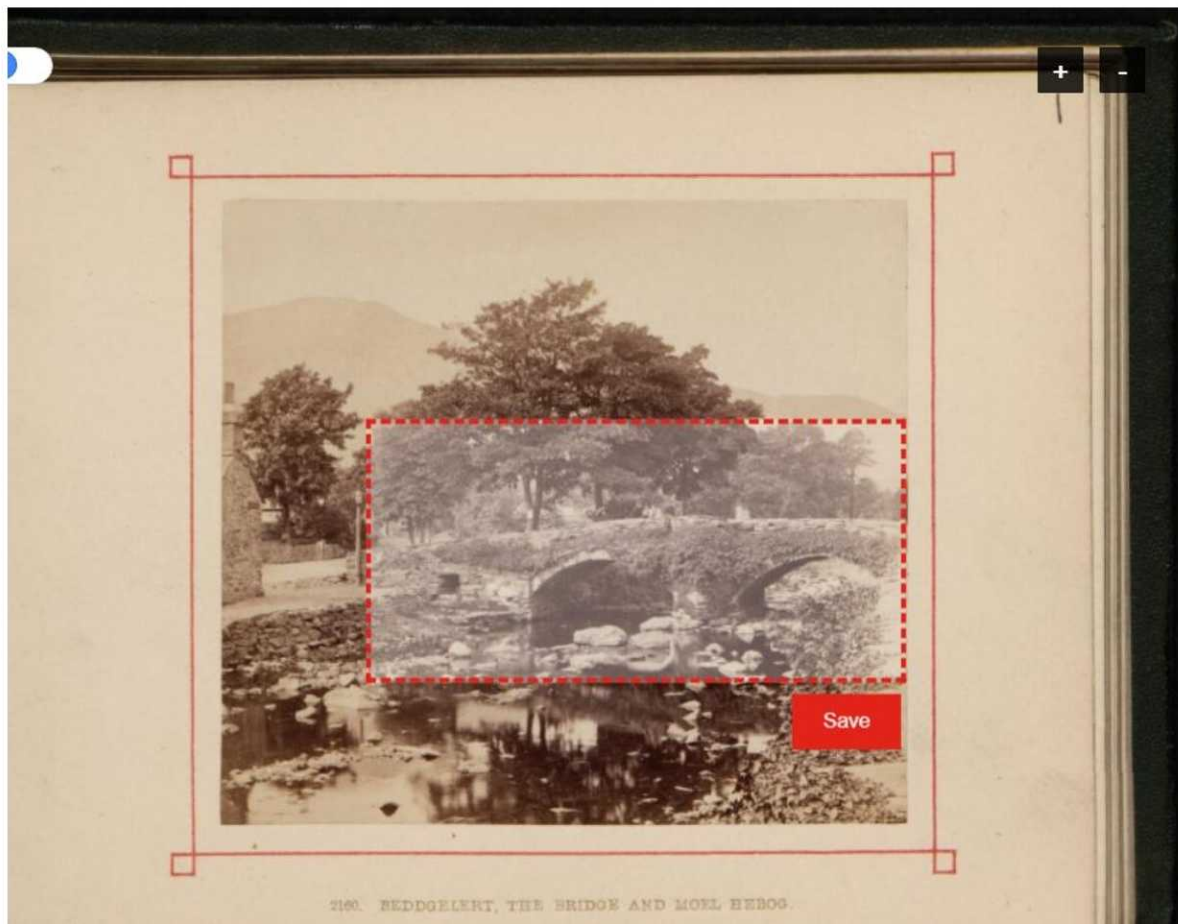
Artworks with depict without relative position within image: 49

Fragment	Wikidata	Title	Creator	Year	Collection	Image
	Q55006037	Mr. Christophorus Love	Abraham Conrad	1659	National Library of Wales - Welsh Portrait Collection	
	Q55005790	Thomas Killigrew	William Faithorne	1664	National Library of Wales - Welsh Portrait Collection	
	Q64686286	Lewis Proser		1700	National Library of Wales - National Library of Wales Framed works of art	



Previous Image

Next Image →



2160. REDDGELEERT, THE BRIDGE AND MOEL HEROG.

Tag 'things' on page



Move the red box to draw box around objects or 'things' that appear in the photograph and tag them (i.e. say what they are). For example cars, people, trees, building, chimney etc.

Please select a region on the page

Start typing to find a relevant tag. ?

bridge

structure built to span physical obstacles

card game

Next >

room or platform from which a ship can be commanded

fixed dental restoration used to replace missing teeth by joining an artificial tooth definitively to adjacent teeth or dental implants

Bookmark

an elevated road or railway or section thereof

Flag as inappropriate

Mark as complete



WIKIMEDIA
UK

@Wiki_NLW

LG
NLW